

达祖小学新芽学堂，四川，中国

New Bud Study Hall in Dazu Primary School, Sichuan, China, 2010

建筑设计：谭善隆，夏珩，朱竟翔/深圳元远建筑科技发展有限公司，香港中文大学建筑学院

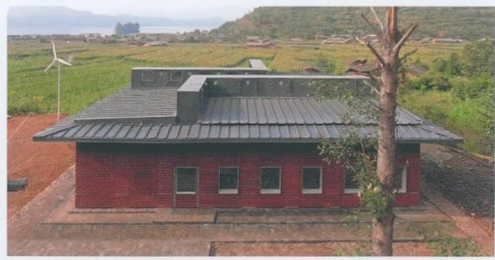
Architects: TAN Shanlong, XIA Heng, ZHU Jingxiang/Unitinno Architectural Technology Development Co.,Ltd.; School of Architecture, The Chinese University of Hong Kong

新芽学堂提供富于差别的教学空间，其多样化的使用方式十分适合收生多变的民办小学与少数民族孩童，帮助小学发展成全日制完全小学。作为始于2008年新芽建筑系统开发与应用系列工作中的关键案例，新芽学堂展示了如何通过系统化设计提升乡村建筑的结构、性能和效率。□

The New Bud Study Hall provides discrepant space, which suits the uncertain enrolling situation in a remote area, and develops it into a complete primary school. As a key project of the New Bud System developed from 2008, it excels in energy efficiency, space design, earthquake resistance, durability and short construction time. □



3



1

项目信息/Credits and Data

客户/Client: 达祖小学/Dazu School

地点/Location: 四川盐源县泸沽湖旁木垮村/Mukua Village, Luku Lake, Yanyuan, Sichuan

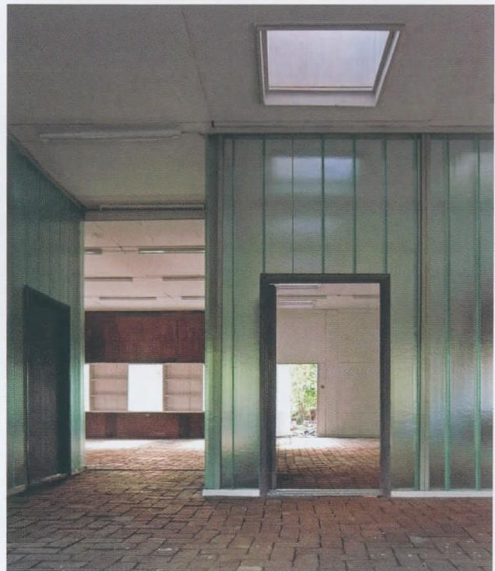
主创建筑师/Principal Architects: 谭善隆, 夏珩, 朱竟翔/TAN Shanlong, XIA Heng, ZHU Jingxiang

设计团队/Project Team: 张东光, 刘振, 周毅, 刘宇,

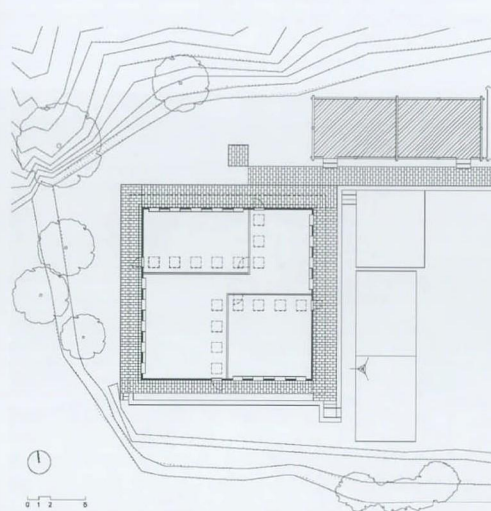
丁明生, 陈晓郭, 欧万年, 黄印武, 张宇, 黄黄杜, 马冠勇, 王双鸣, 刘冠文/ZHANG Dongguang, LIU Zhen, ZHOU Yi, LIU Yu, DING Mingsheng, CHEN Xiaoguo, OU Wannian, HUANG Yinwu, ZHANG Yu, HUANG Huangdu, MA Guanyong, WANG Shuangming, LIU Guanwen

设计时间/Design Time: 2010.01

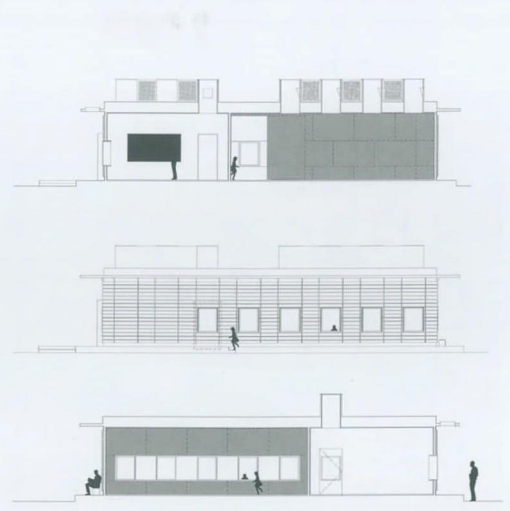
建成时间/Completion Time: 2010.08



2



4



5

1 鸟瞰/Aerial view

2 内景/Interior view

3 外景/Exterior view

4 平面/Plan

5 剖面及立面/Section & elevation

DOI:10.16414/j.wa.2017.03.010