

有種嘢

旅游发展与都市介入工作

UNIVERSEEDITY

The works of tourism development and metropolitan alteration

UNITINNO

info@unitinno.com
www.unitinno.com

LIST OF CONTENTS

目錄

APSARAS Tribe, Philippines
Meili Primary School Transitional Campus
The Foreign Language School
Shenzhen Longhua No.3 Primary School
Luohu Liannan Primary School Lianxin Campus

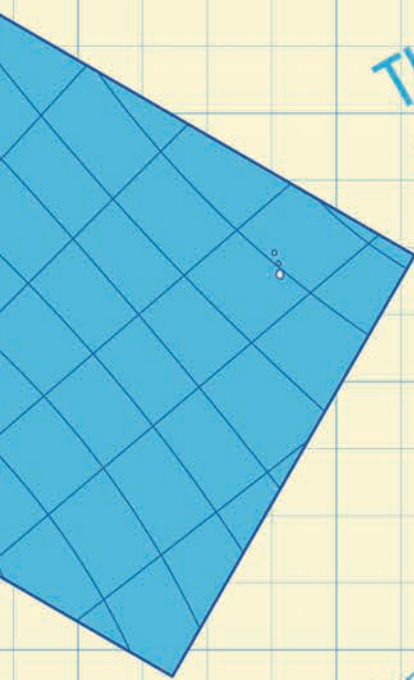
菲律賓阿普薩拉斯運動酒店
深圳梅麗騰挪校園
深圳龍華教課院附屬外國語學校
深圳龍華區第三小學
深圳羅湖區連南小學

The Lightweight Works from
Professor ZHU Jingxiang and his Research Mates

Universeedity

at Manchoi, Hong Kong • EXHIBITORS:
... / NAN Tian / TAM Sin Lung
• HOST: Southern
Architectural
Association /

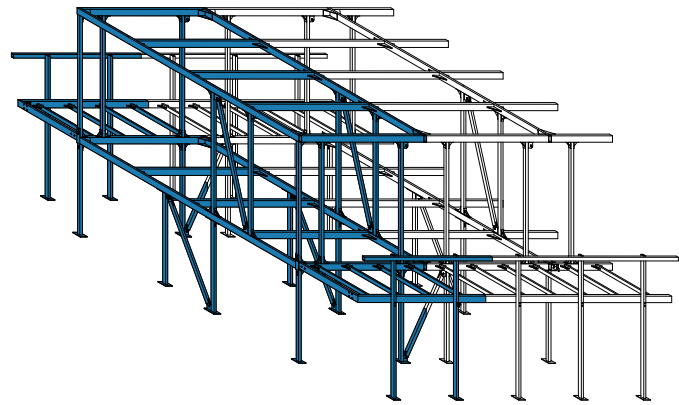
香港建築師學會
香港建築師學會
香港建築師學會
香港建築師學會



The LCC Professor's Universe

- **VENUE** : 15/F Hong Kong Arts Centre, 2 Harbour Road, Wanchai, Hong Kong
- **EXHIBITORS** : GHELICHI Pedram / LAU Hing Ching / HAN Guoqi / HE Yingjie / NAN Tian / TAM Sin Lung
- **HOST** : Southern Cross University
- **ORGANISER** : Unitinno Architectural Foundation / Bridge Strategy & Technology
- **SPONSOR** : Hong Kong LFM Art Foundation / Guangzhou KLCC Aluminum Ltd.
- **SUPPORT BY** : He Foundation / School of Architecture, CUHK
- **OPENING CEREMONY** : 2025.10.02 (Thu) 6:30 PM - 7:30 PM
- **SEMINAR** : 2025.10.04 (Sat) 3:30PM - 5:30PM

A CONSTRUCTION SYSTEM OF THE DENSE
STEEL FRAME
一種密集柱鋼框架建造系統



Commission	Apsaras Group Limited,Apsaras Tribe Philippines Inc.
Designer	ZHU Jingxiang,WU Chenghui, HE Yingjie, LAU Hing Ching, NAN Tian
Feature	1850 square meters, a 40-room hotel with restaurant and facilities
Assembly	in 7 months, 2018

APSARAS TRIBE, SIARGAO ISLAND, PHILIPPINES

委託	華創海旅集團阿普薩拉斯（菲律賓）有限公司
設計	朱競翔，吳程輝，何英傑，劉鑫程，南天
規模	一千八百五十平方米，四十間客房配套後勤及餐廳
組裝	七個月，二零一八年

菲律賓錫亞高島阿普薩拉斯運動度假酒店

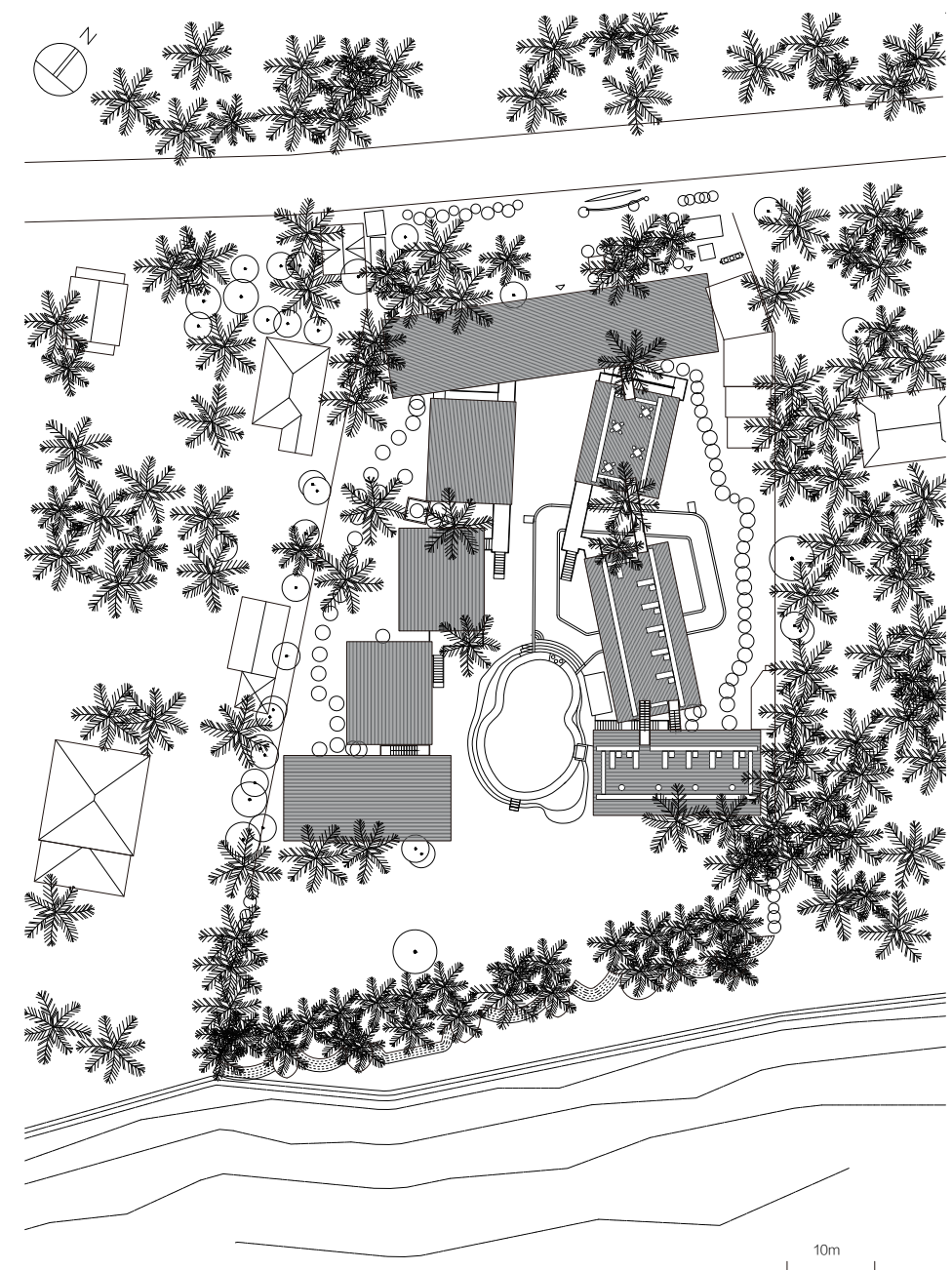
C1¹



C1²



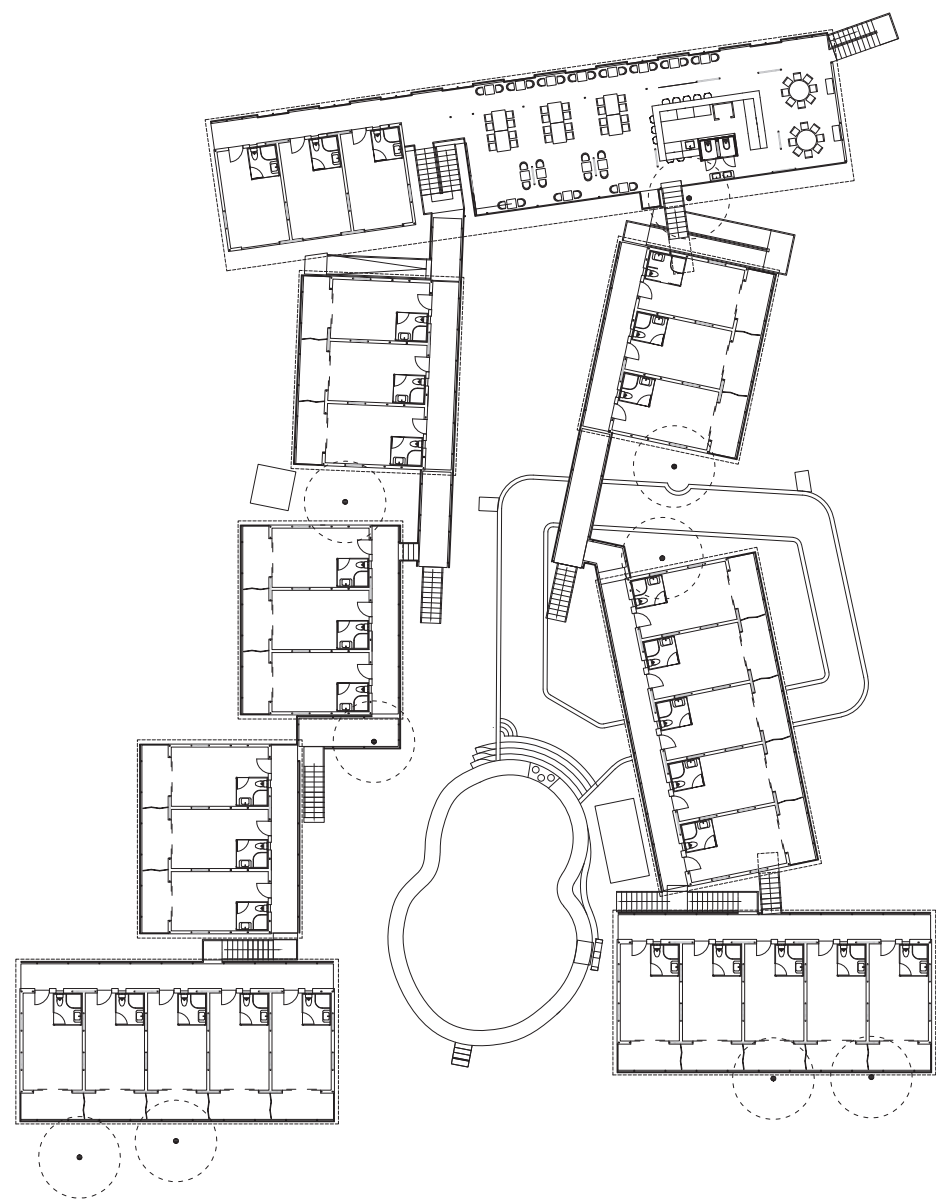
C1³



The traditional construction time for an off-island hotel was reduced to one-third. Visionary planning for the site and the business helped the client recoup its construction costs within three years, seamlessly mitigating the impact of pandemics and geopolitical conflicts.

將離島酒店的傳統施工時間降低為三分之一。前瞻性商業規劃幫助客戶在三年內收回建設成本，完美規避了疫情與地緣衝突。

C1⁴



The island sports hotel serves the emerging middle class and family tourists. The open lobby, restaurant, and central street guide the views from the main entry to the muddy seaside.

這個島嶼運動酒店服務新興中產階層與家庭遊客。開放式的大堂、餐廳，以及中央主街將海濱引向入口。

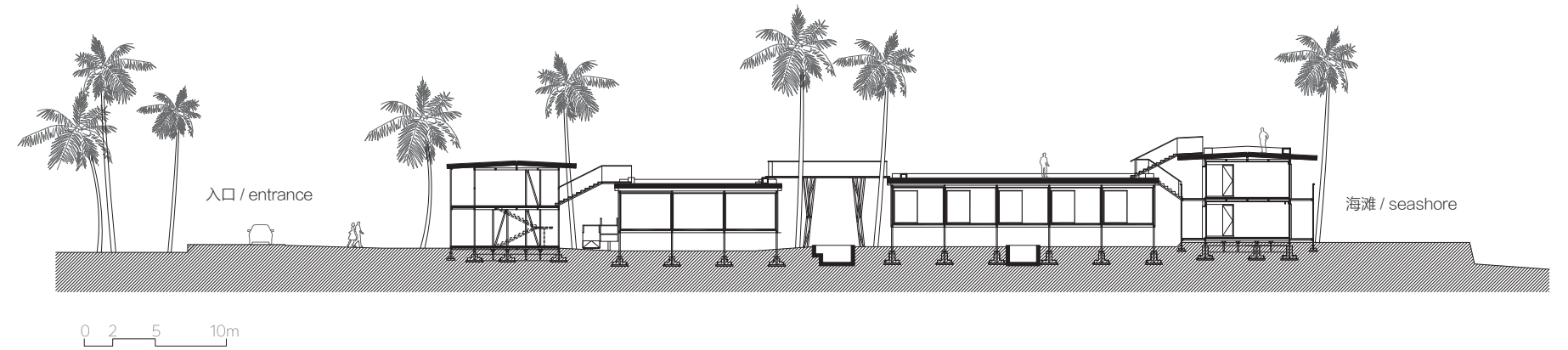
C1⁵



C1⁶



C1⁷



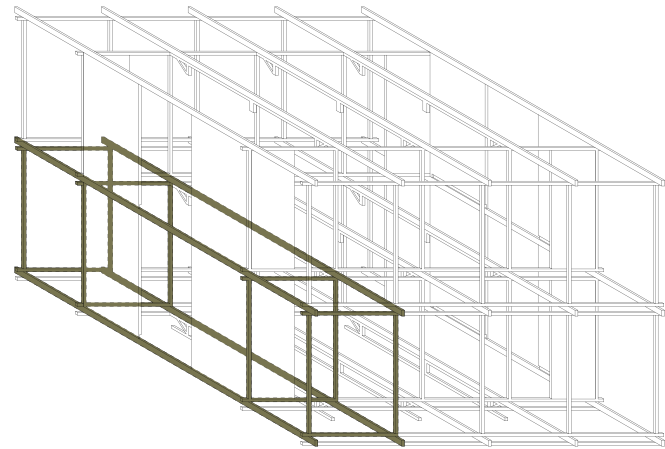
The pool and a canal loop compensate the swimmer with an attractive outdoor experience.

C1⁸

水池與運河提供泳客差異性的體驗。

A CONSTRUCTION SYSTEM OF THE STEEL
FRAME PLATFORM

一種以鋼框架平台法建造系統



Commission	Shenzhen Futian District Government
Design	ZHU Jingxiang, LAU Hing Ching, HAN Guori, HE Yingjie, LIAN Dapeng, et al.
Feature	5600 square meters, a 33-class campus
Assembly	in 5 months, 2018 summer

MEILI PRIMARY SCHOOL TRANSITIONAL CAMPUS

梅麗小學騰挪校園

委託	深圳市福田區政府
設計	朱競翔，劉鑫程，韓國日，何英傑，廉大鵬 等
規模	五千六百平方米，三十三班小學
組裝	五個月，二零一八年夏季

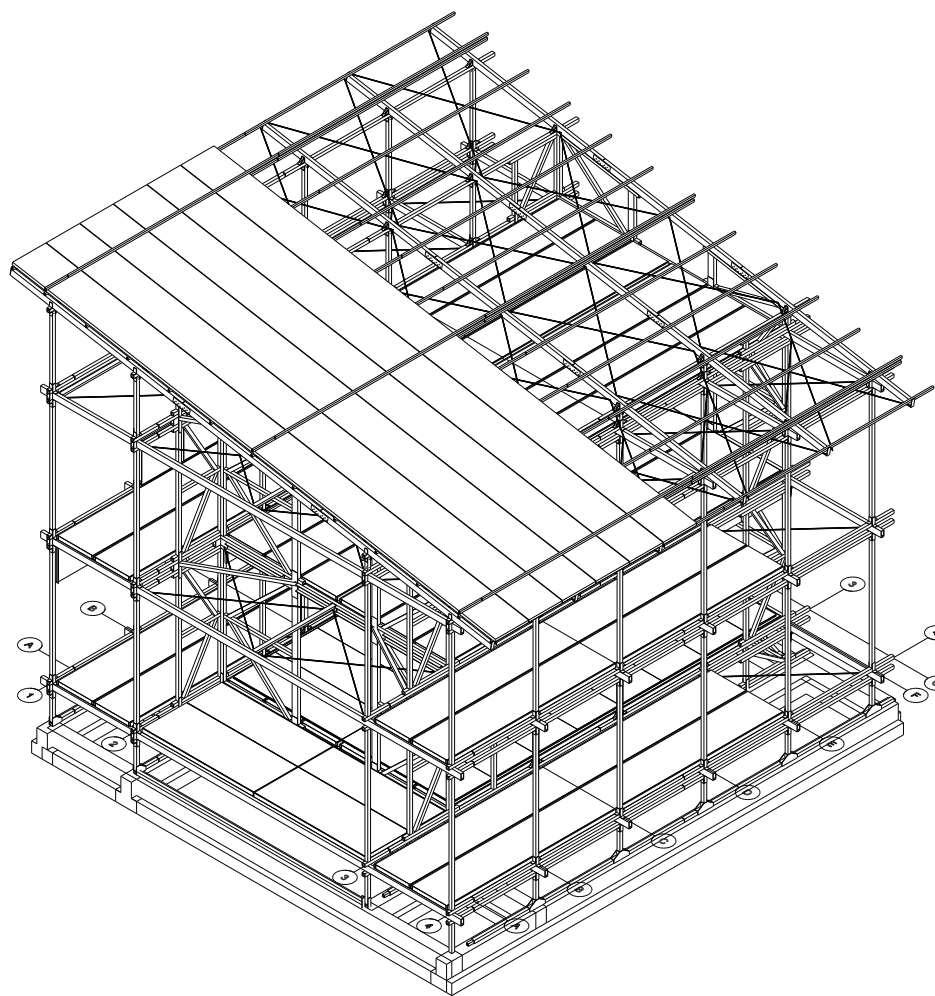
C2¹



C2²



C2³



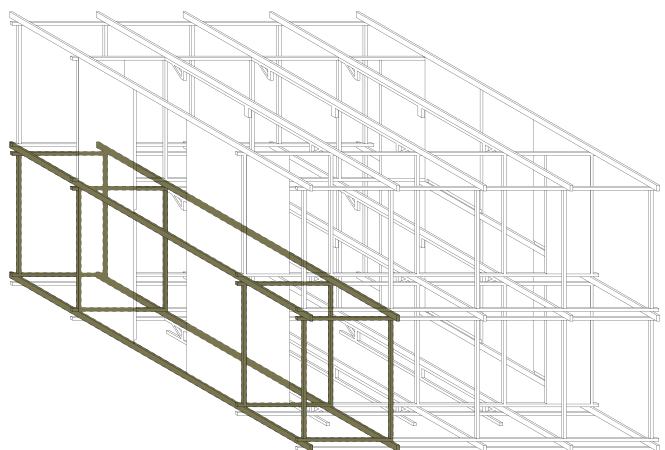
The project's innovative hybrid approach brought lightweight construction to the metropolitan core, offering ultra-fast deployment and superior performance, paving the way for Shenzhen to provide educational enrollment quotas with agile school building types.

C2⁴

項目的復合創新將輕量建築帶向都市核心，超快部署速度也具備優越性能，開啓了深圳以敏捷校舍快速提供學位的路徑。

A CONSTRUCTION SYSTEM OF THE STEEL
FRAME PLATFORM

一種以鋼框架平台法建造系統



Commission	Shenzhen Longhua District Government
Design	ZHU Jingxiang, LAU Hing Ching, HAN Guori, HE Yingjie, LIAN Dapeng, et al.
Feature	5840 square meters, a 36-class campus for primary and junior high years
Assembly	in 5 months, 2019 autumn

THE FOREIGN LANGUAGE SCHOOL AFFILIATED TO LONGHUA ACADEMY OF
EDUCATIONAL SCIENCE

委託
設計
規模
組裝

深圳市龍華區政府
朱競翔，劉鑫程，韓國日，何英傑，廉大鵬 等
五千八百四十平方米，三十六班，小學與初中
二十週，二零一九年秋季

龍華教科院附屬外國語學校

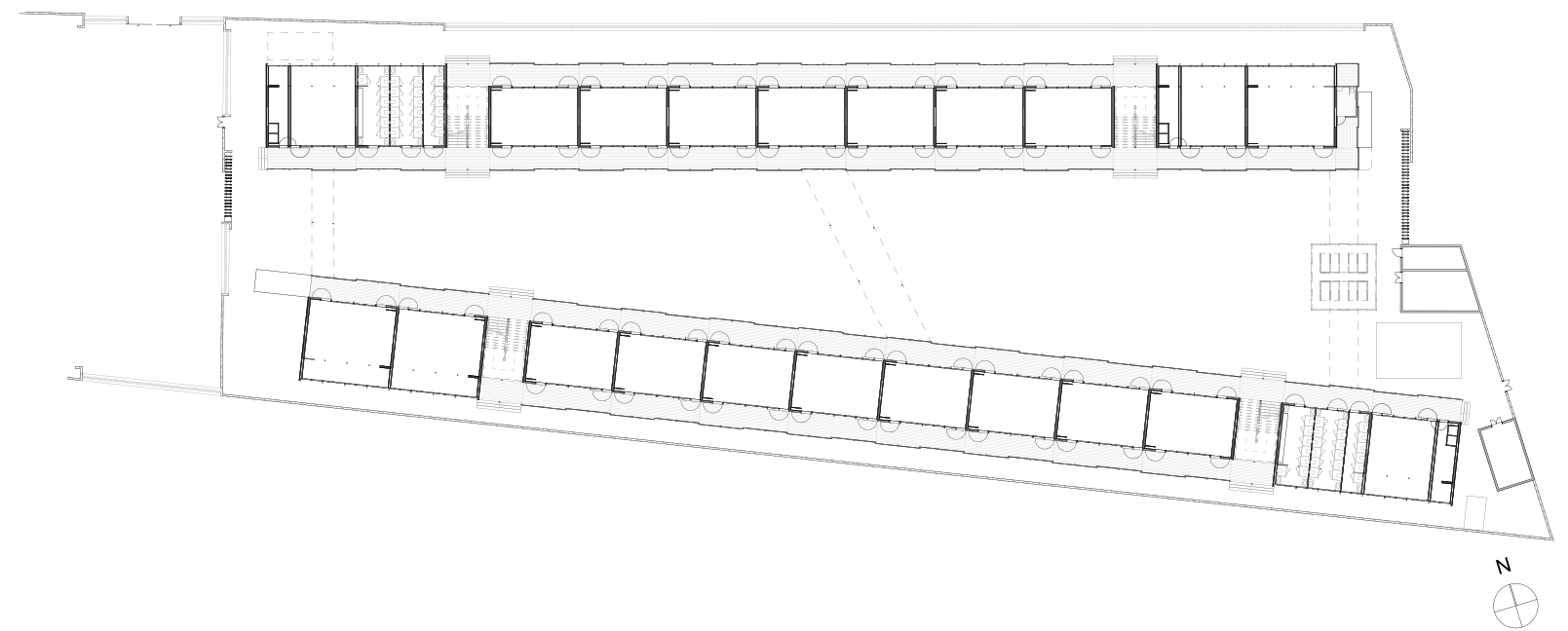
C3¹



C3²



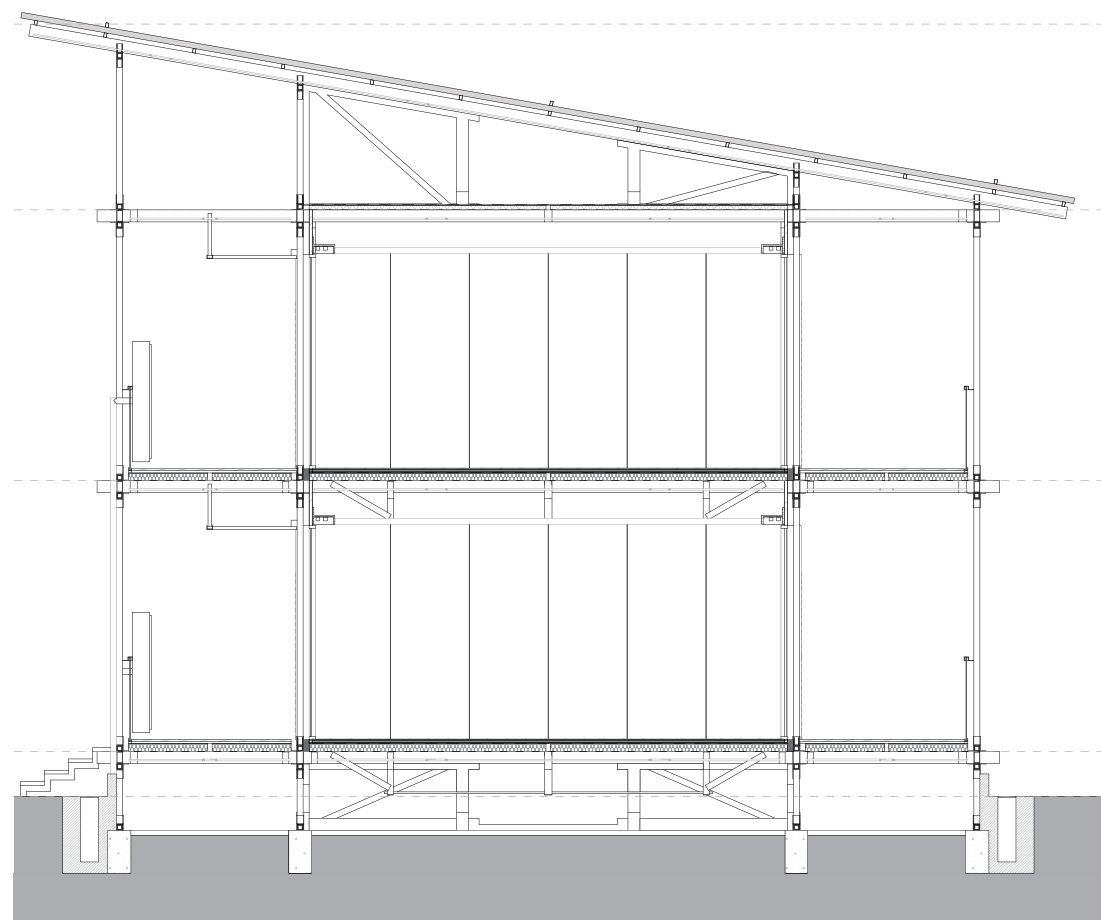
C3³



This agile school, built on reserved green space adjacent to an urban village, has rapidly provided nearly 1,600 educational enrollment quotas, creating a flexible campus with visual dynamics.

在城中村旁預留綠地建造了這個敏捷學校，快速提供了近一千六百個學位，
梯型校園富於靈活性與動感。

C3⁴



Ultra-slender rods eliminate the materiality of the structure, and the elegant facade comes from the classical proportions between the components. The standardized classroom units become a continuous background of the courtyard, highlighting the children's activities.

超細桿件消失了結構的物質性，優雅立面來自於構件之間的古典比例。標準化的教室單元成為廣場連續背景，烘托出兒童活動。

C3⁵

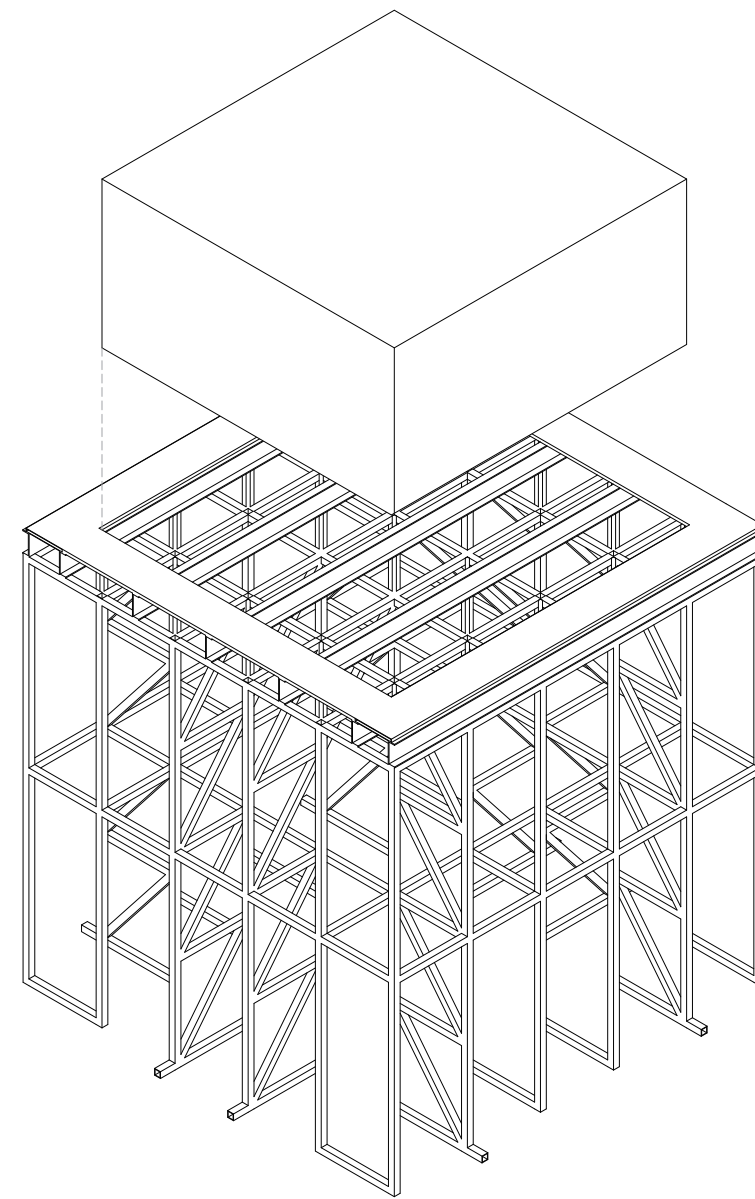


C3⁶



C3⁷

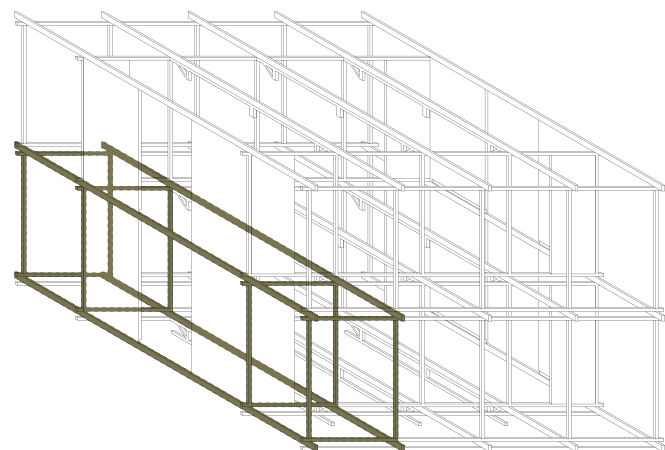
Ultra-slender rods create beam string and water tank supports, which become spatial elements and bring a jungle-like tropical ambiance.



C3⁸

超細桿件產生了張弦梁與消防水箱支座，它們成為空間要素，帶來叢林般的熱帶感受。

A CONSTRUCTION SYSTEM OF THE STEEL
FRAME PLATFORM
一種以鋼框架平台法建造系統



Commission Shenzhen Longhua District Government
Design ZHU Jingxiang, LAU Hing Ching, HAN Guori, HE Yingjie, LIAN Dapeng, et al.
Feature 5480 square meters, a 32-class primary school campus
Assembly in 5 months, 2020 autumn

SHENZHEN LONGHUA NO.3 PRIMARY SCHOOL

委託 深圳市龍華區政府
設計 朱競翔，劉鑫程，韓國日，何英傑，廉大鵬 等
規模 五千四百八十平方米，三十二班小學
週期 二十週，二零二零年

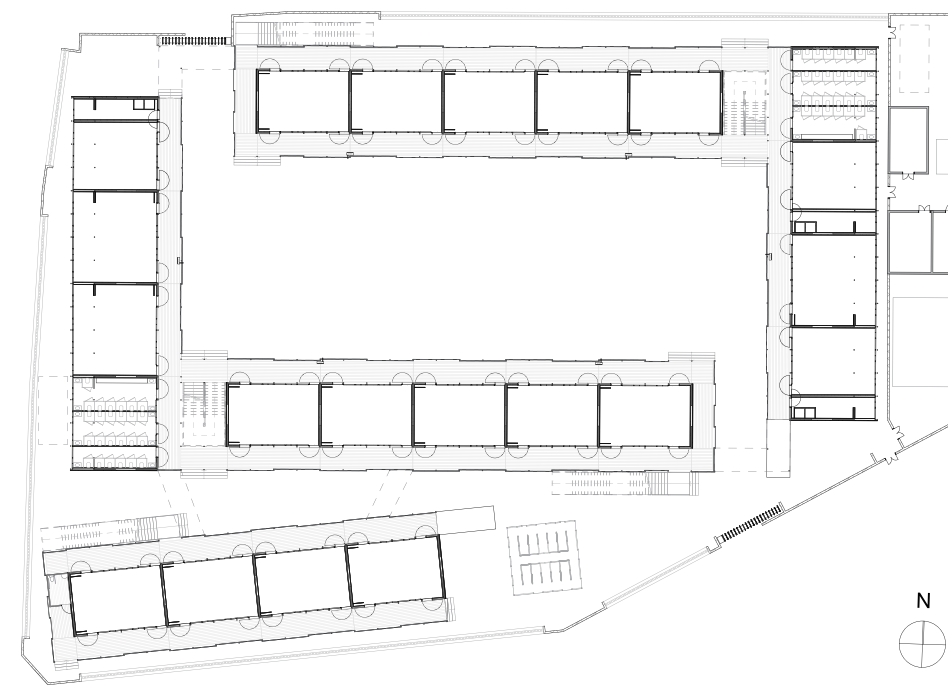
龍華區第三小學

C4¹





C4³



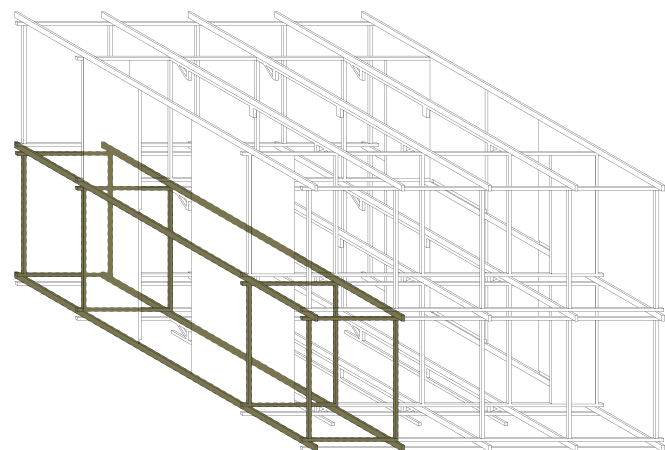
On the land reserved for the Longhua District central cinema, a campus was quickly constructed, providing 1,500 educational places. Forgotten land resources were revitalized by applying garden planning principles to the lightweight structures.

在龍華區中心的電影院用地，盤活土地資源，快速建造園林式校園，提供了一千五百個學位。

C4⁴

A CONSTRUCTION SYSTEM OF THE STEEL
FRAME PLATFORM

一種以鋼框架平台法建造系統



Commission	Shenzhen Luohu District Government
Design	ZHU Jingxiang, LAU Hing Ching, HAN Guori, HE Yingjie, LIAN Dapeng, et al.
Feature	6800 square meters, a 36-class primary school campus
Assembly	in 5 months, 2021 autumn

LUOHU LIANNAN PRIMARY SCHOOL LIANXIN CAMPUS

委託	深圳市羅湖區政府
設計	朱競翔，劉鑫程，韓國日，何英傑，廉大鵬 等
規模	六千八百平方米，三十六班小學
週期	二十週，二零二一年

羅湖區蓮南小學蓮馨校區

C5¹

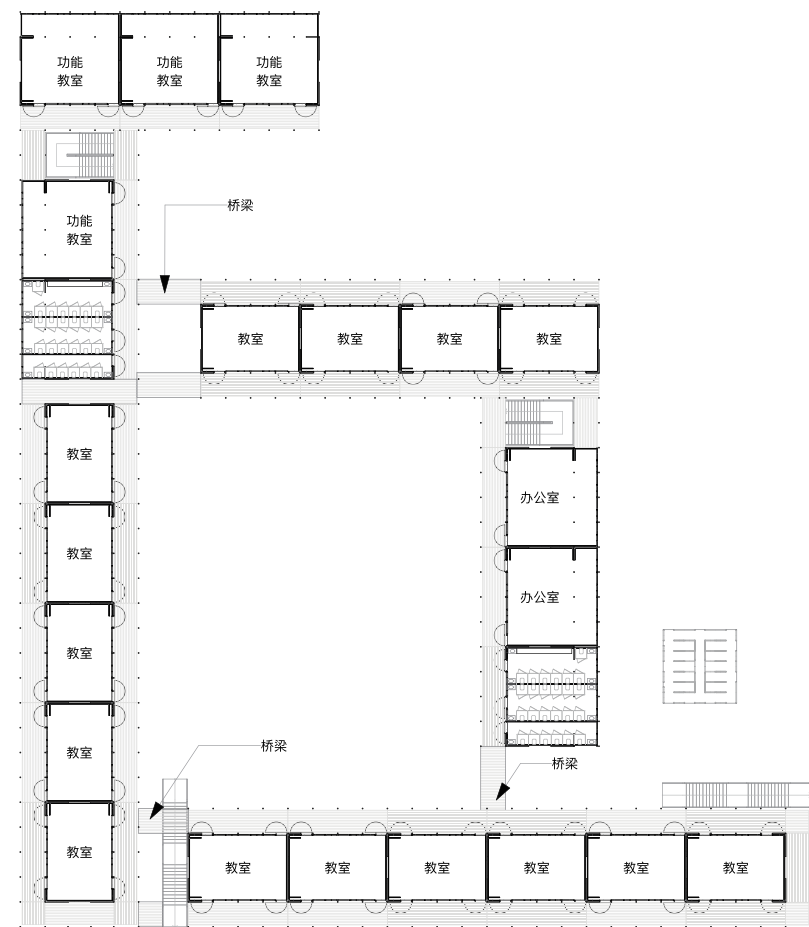


C5²



C5³

在羅湖區複雜陡坡上建造敏捷小學，輕量結構極大降低護坡保護和基礎處置的成本與時間。



An agile primary school was built on a complex, steep slope in the Luohu District. The lightweight structure significantly reduced the cost and time of slope stabilization and foundation preparation.

C5⁴

主辦
承辦
贊助
支持

南橋策略/香港文化藝術創意中心
元遠建築科技發展有限公司
香港林風眠基金會/廣州科萊思誠鋁業
和基金/香港中文大學建築學院

Host
Organiser
Sponsor
Support by

Southern Bridge Strategy & HKCACC
UNITINNO Architectural Technology Development Company Limited
Hong Kong LFM Art Foundation, Guangzhou KLCC Aluminum Ltd.
He Foundation, School of Architecture, The Chinese University of Hong Kong



元遠建築





元遠建築
UNITINNO